



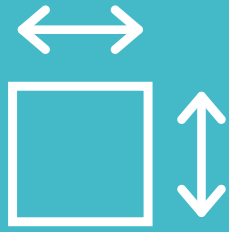
DOW COMPLEX EVENT SPACE RENTAL PACKAGES

BY  LIVE LOVE SPA

ABOUT



2991 Dow Ave.
Tustin, CA 92780



10,300 sq. ft.

EST.

2018

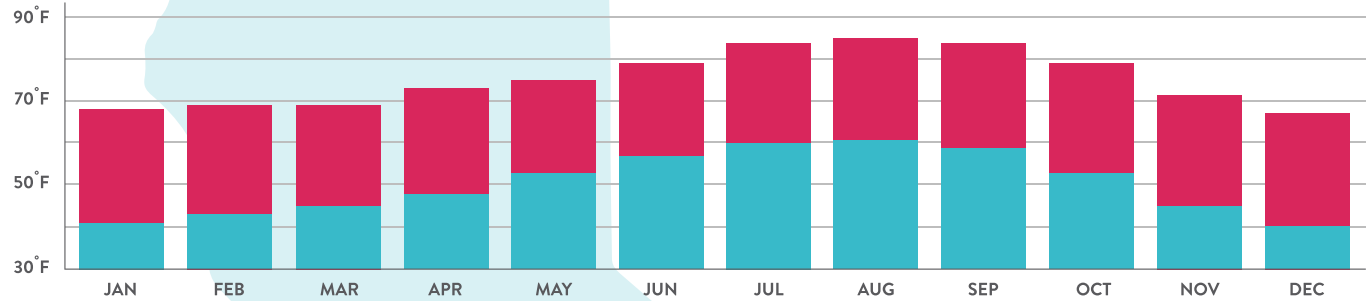
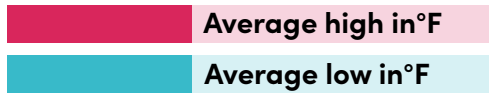
Creative office and event space in Tustin, CA designed to offer businesses and non-profits a centralized venue for meetings, trainings, retail showcases, and customer focus groups.

The Dow Complex Event Space is conveniently located just minutes away from John Wayne Airport, Tustin Marketplace, The District, & Diamond Jamboree. Access to the 5, 405, 55 and 73 highways makes commuting easy and is also just a 3-minute walk from the Tustin MetroLink Station.”



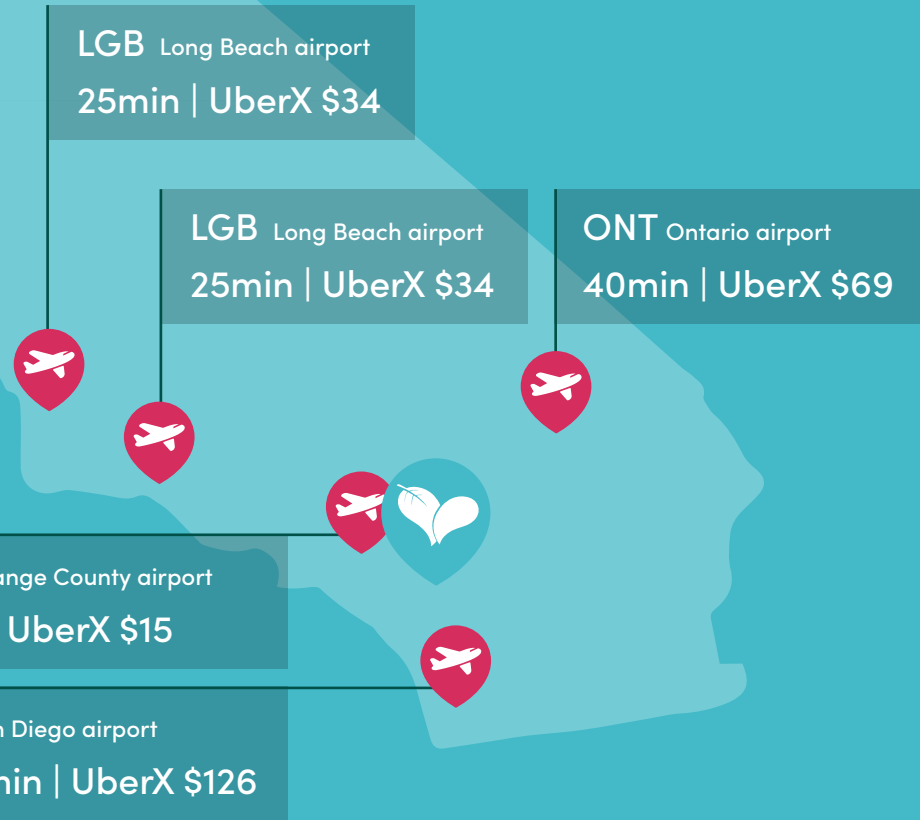
LOCATION

Live Love Spa Headquarters
2991 Dow Avenue, Tustin, CA 92780



ORANGE COUNTY

Stands out as one of the California's most iconic destinations. The Disneyland Resort, continues to be one of the best-loved theme parks in the world, while Knott's Berry Farms and other OC attractions amp up the fun meter. Some of the best shopping in the world can be found at South Coast Plaza, Irvine Spectrum or Fashion Island. If you're looking to step into the Pacific Ocean, you'll have your choice on the epic coastline including Huntington Beach, Newport Beach, Crystal Cove and Laguna Beach.



Live Love Spa headquarters is conveniently located to the following airports, traffic may affect drive times.

AMENITIES ALWAYS INCLUDE

- a. Wi-Fi access in all areas
- b. Private entrance / exit
- c. Money saving catering options including easy access for food truck
- d. 30 dedicated parking spaces + unlimited street parking with notice
- e. 3-minute walk from Tustin train station
- f. easy 5 freeway access from Jamboree
- g. convenient, all in one pricing options (no hidden fees)
- h. full use of all listed equipment
- i. Flexible use spa treatment rooms or can be converted to meeting rooms
- j. Easy load-in / Load out with two overhead doors

COFFEE & TEA SERVICE INCLUDED

- Curtis Combo high capacity coffee and tea brewer
- LaVazza Italian Coffee
- Mighty Leaf Organic hot and iced tea
- Sweeteners / creamers

AVAILABLE EQUIPMENT

INCLUDED IN ALL PACKAGES (with request & notice)

- LG 86" Monitor w/ rolling stand
- LG 60" Monitor w/ rolling stand
- Sonos sound system
- Custom rolling Bar
- QTY (8) 4' X 8' Boxwood Hedges
- QTY (16) 7' Artificial Yucca Trees
- QTY (7) 60" Round Mitylite Tables
- QTY (20) 4' X 2' Folding Tables
- QTY (107) Mitylite Banquet Chairs
- QTY (12) Steelcase executive chairs
- QTY (6) Executive meeting room chairs with arms
- Flip boards
- QTY (10) 10' X 10' Pipe & Drape (100' Ivory only)
- QTY (3) massage tables
- QTY (3) hot towel caddies

RENTALS

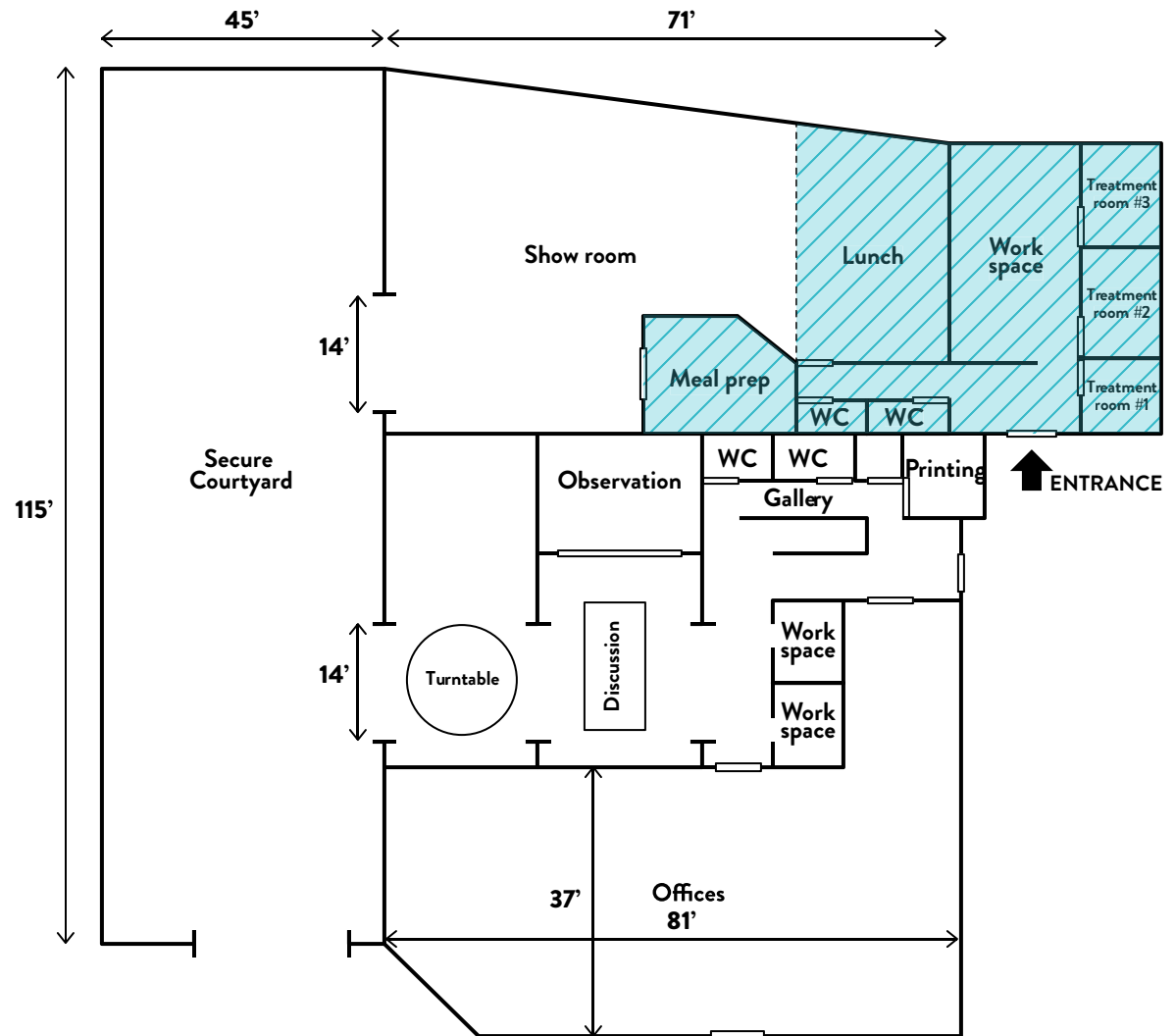
- Self service photo booth \$200 per day
- Towels for treatments \$200 (up to 30 towels)
- Massage table linens \$200 (up to 30 linens)
- Tablecloths for conference tables \$15/linen +delivery (estimated \$100 - \$200 based on weight)

PACKAGE #1

Up to 20 people - Bronze \$995 / Day (8am-5pm)

INCLUDES:

- 1,683 of total dedicated space that includes:
 - Meeting / Training Room – 444 sq. ft. (max 20 people classroom)
 - Breakout / Treatment Room #1 – 148 Sq. ft.
 - Breakout / Treatment Room #2 – 174 Sq. ft.
 - Breakout / Treatment Room #3 – 126 Sq. ft.
 - Lunch area – 570 Sq. ft.
 - Meal prep area – 221 Sq. ft.
- Two restrooms
- Two mini-frigs (training and lunch area)
- Full size refrigerator (meal prep area)
- Freezer (meal prep area)
- Microwave (meal prep area)
- Two sinks (training room & meal prep area)
- Two Insta-hot taps (training room & meal prep area)
- Filtered water (training room)



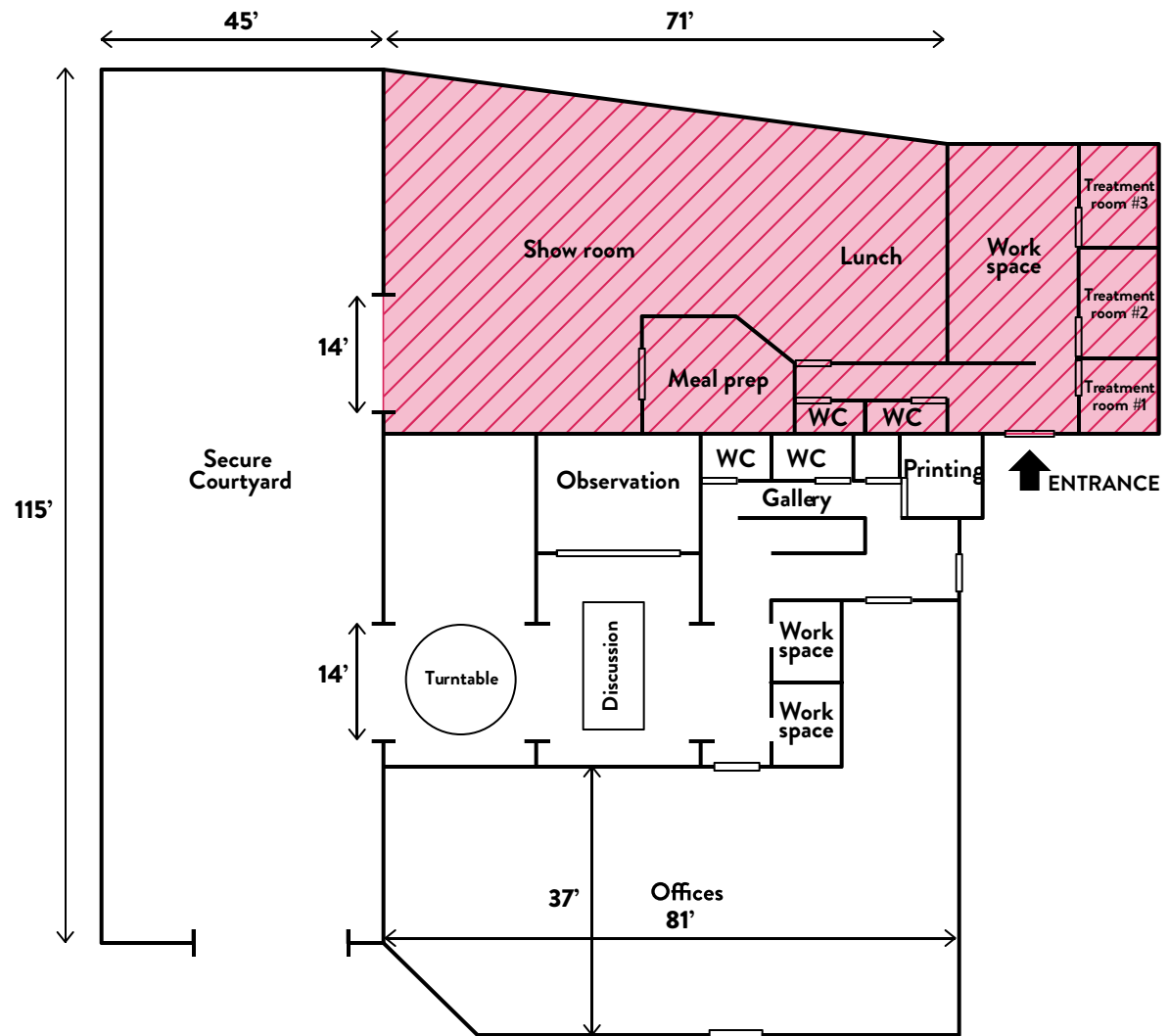
PACKAGE #2

Up to 50 people: - Silver package \$1,495 / Day (8am-5pm)



INCLUDES:

- Includes **all of package #1 + additional 2,390** of meeting / training / showcase space
- Total Sq. Ft = 4,073
- Includes overhead warehouse door for easy load-in/ load-out
- Direct food truck access for guests

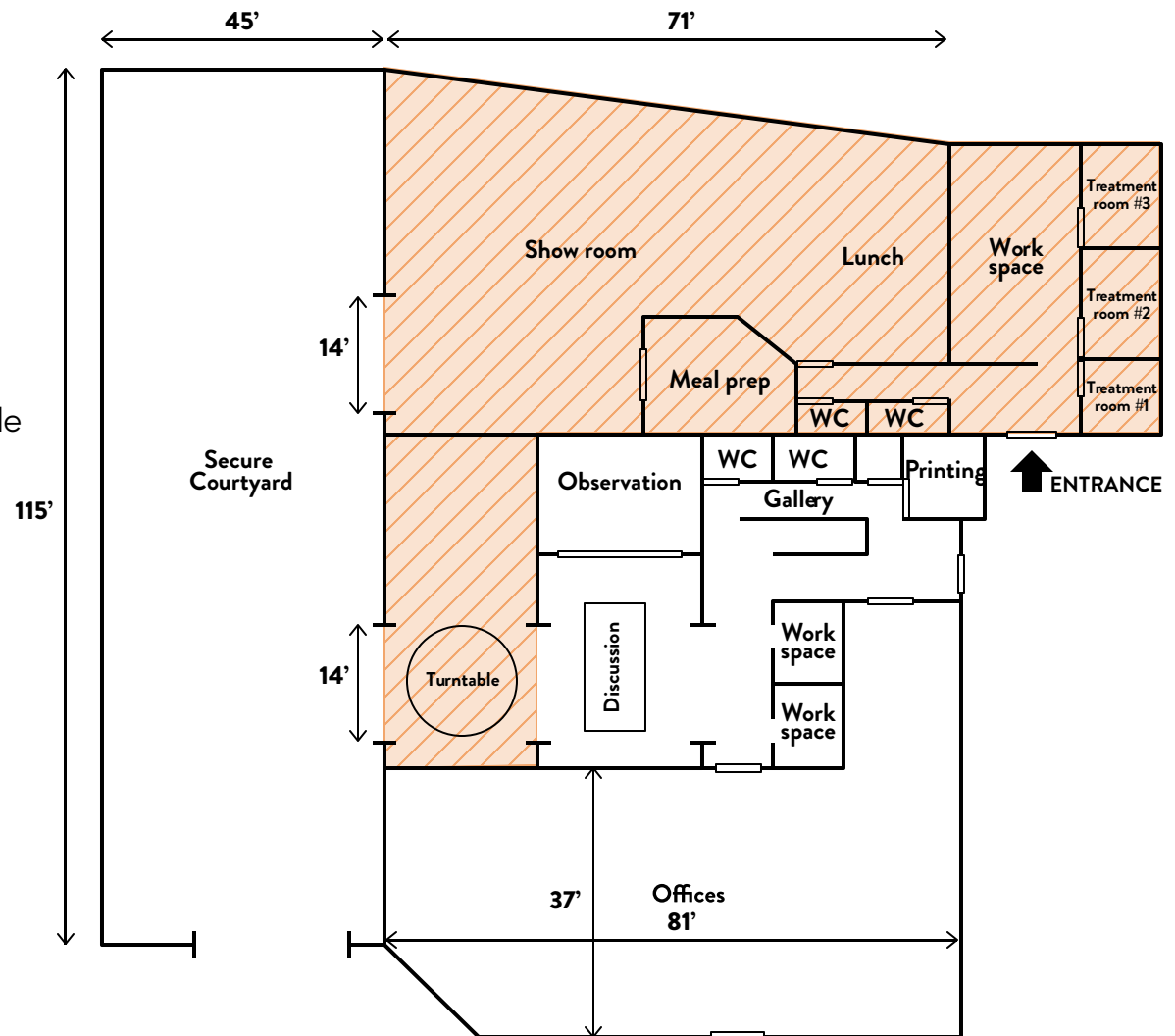


PACKAGE #3

Up to 100 people – Gold package \$1,995 / Day (8am-5pm)

INCLUDES:

- Includes **all of package #1 & #2 + additional 952 sq. ft.** of meeting / training / showcase / lunch space
- Total Sq. Ft = 5,025
- Includes two (2) overhead warehouse doors for easy load-in/ load-out
- Direct food truck access for guests
- Includes round 16' diameter auto display turntable

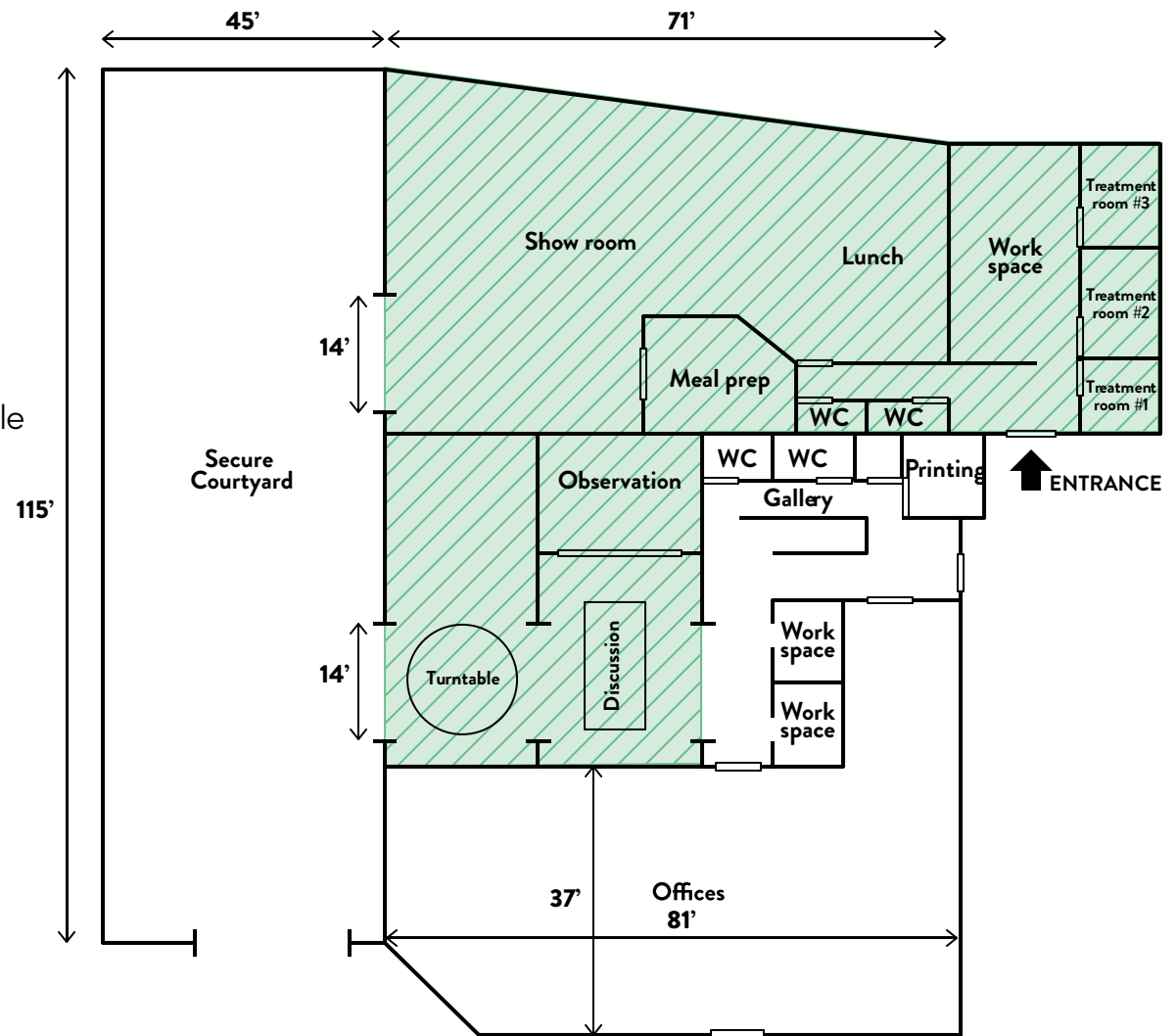


PACKAGE #4

Up to 150 people – Platinum package \$2,500 / Day (8am-5pm)

INCLUDES:

- Includes **all of package #1, #2 & #3 + additional 400 sq. ft.** discussion room and 264 sq. ft. Focus group observation room
- Total Sq. Ft = 5,689
- Includes two (2) overhead warehouse doors for easy load-in/ load-out
- Direct food truck access for guests
- Includes round 16' diameter auto display turntable



CONTACT

Thank you

for considering the Dow Complex for your training or event needs.
We look forward to working with you.



Kajsa Garrett

Director, Business Solutions

(970) 214-1301

Kajsa@livelovespa.com